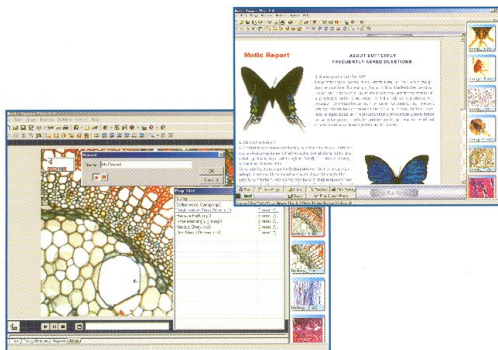


Motic®

High Resolution Digital Imaging

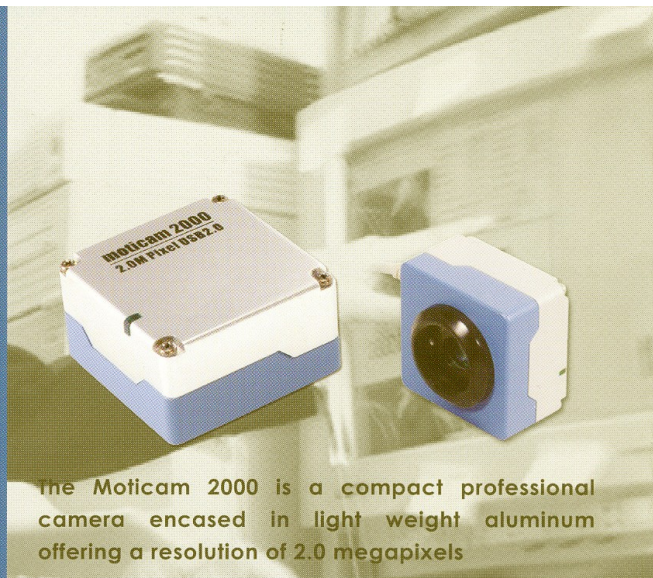
Next Generation Microscopy Camera

Motic's adaptable cameras turn almost any microscope into a high-resolution Digital Microscope



Moticam 2000

USB2.0 High Resolution Camera

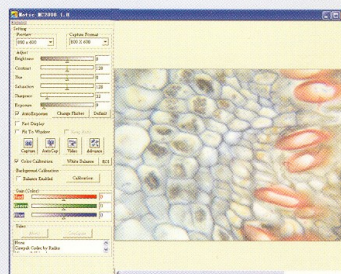


The Moticam 2000 is a compact professional camera encased in light weight aluminum offering a resolution of 2.0 megapixels



All standard accessories such as eyepiece adaptors and the lens are of course included in the package allowing the Moticam 2000 to be used in many different ways.

The capture interface of the Moticam 2000 offers advanced image control features as well as real-time filtering and noise reduction.



To allow for even more professional images to be taken, a special Motic B&S adaptor is included in the Moticam 2000 package. This allows the camera to be mounted into virtually any eyepiece tube such as on this Motic BA series microscope.

2.0 Megapixel resolution and complete image control

For the ultimate in plug & play digital microscopy conversions, the Moticam 2000 is a professional high-resolution digital camera featuring an industrial metal case.

The superior capture interface allows for Real-time filtering with many different choices of effects.

Focusing attention on a single position is easy with the integrated Region Of Interest selection control.

The Moticam 2000 allows you to save your specific setup for any microscope saving both time and effort when moving the camera between different microscopes and different brands. The Moticam 2000 provides the best image, every time.

For even more professional quality images, the Motic B&S adaptor is also provided in this amazing package. Simply remove the eyepiece and slide it into the eyetube.

The ultra high-speed USB2.0 connection means that there is only one cable to connect to your computer. No additional power supply is needed.

Moticam

2000

Standard

Accessories



Moticam 1000 CMOS camera with C-ring
16mm CCTV lens

28mm, 30mm, 34mm, 35mm
eyepiece adaptors

USB 2.0 connecting cable
(permanently attached to camera)

Calibration slide for accurate measurements

Macro viewing tube

Multilanguage Application Software
(latest version supplied)

Motic USB2.0 PCI capture card

Motic B&S camera to eyetube adaptor



Specifications

of

Moticam

2000

Particulars	Moticam 2000
Included Software	Motic Images Plus 2.0 , Multilanguage
Image Device	1/2" CMOS
Lens	16mm
Effective Pixels	1600x1200
Still Image Resolution	1600x1200
Scanning System	Progressive scan mode
Max. Frame Rate	10fps @1600x1200 , 40fps @800x600
Data Transfer	480MB / second
Minimum Illumination	3 lux
Lens Mount	C-mount (12.5mm)
Shutter	Manual
Video Output	Transmission across Motic software direct into memory of PC
White Balance	Automatic / manual (control by software)
USB Output	Yes
USB Power Supply	5V self-power from computer
Microscope Adaptors	4 different sizes included
USB standard	2.0
Minimum system requirement	P3 1GHZ or higher, HDD 1G unused, RAM 256MB, Display Memory 32MB, Windows2000 & XP